

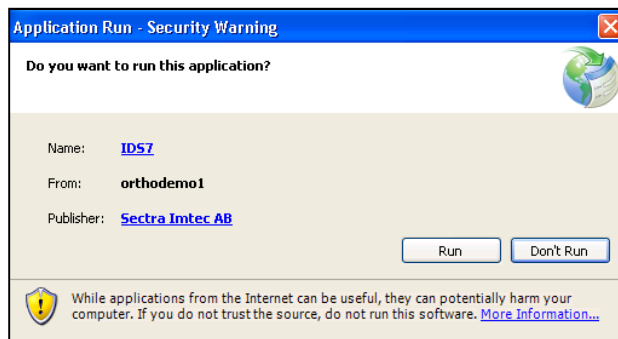
Getting started with IDS7

The first time you launch IDS7 you will have to download NET Framework, DirectX and IDS7. It will take a few minutes depending on your network connection. Please follow the steps below:

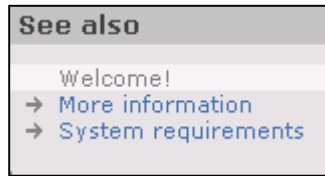
- Open Internet Explorer and type the http address for IDS7. It is usually <http://ipaddress/ids7> where you have to replace <ipaddress> with the correct address to the IDS7 server.
- It is recommended to store the web page under Favorites in Internet Explorer or as an icon on your desktop.



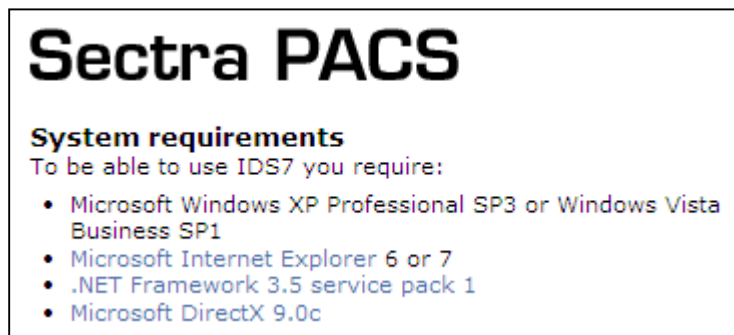
- Click “Start IDS7”.
- You will be prompted to install the software -> Select “Run”



- If you get a warning about system requirements. Click OK and click on the “System Requirements” link to the right on the “Start IDS7”-screen.



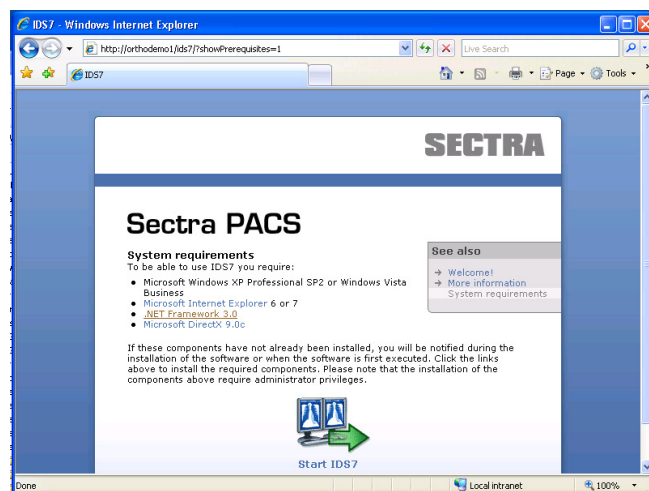
- Click on the link for .Net Framework 3.0, when asked if you want to install, click “Run”.



- Then click on the link for Microsoft DirectX 9.0c, when asked if you want to install, click “Run”.

NOTE: Installing .Net and DirectX is only needed if you get a requirement warning the first time you try to install IDS7. If you have those components installed on your computer already, you will not have to do it again. Downloading and installing these components can take a few minutes depending on your network connection.

- Restart your computer if you are asked to do so.



- After the installation for .Net and DirectX, click on Start IDS7 again. When asked if you want to install IDS7, click “Run”.
- Login with your user name and password.



NOTE: If you performed this installation on a remote computer (your home computer or a computer at an outside facility separate from the radiology/orthopedic department), you need to contact the system administrator for IDS7 and let him know that you are working remote. A few changes might be required on his side in order for you to utilize the system in the most appropriate way.